

FESTOOL

**It will be a long time
before there's a better
router than this!**

Router OF 1400 – sets new
standards in its class



**Tools
for the toughest demands**

The new router OF 1400

The innovative tool concept at a glance

Perfection in all areas.

A tool concept that sets new standards: whether the issue is size, weight, handling or power – the OF 1400 is guaranteed to impress. As a new development, it fulfils all the requirements of a router in the middle power class.

No matter what you have in mind: the OF 1400 is characterised with features that leave nothing to be desired. For perfect routing results with easy handling.



Independent accuracy.

The accurate depth setting with "Zero" function and free of play, enables the routing depth to be adjusted quickly and without the need for recalculation. The fine adjustment is accurate to 1/10 mm.



World First

Steadfast stability.

Once the routing height is set, the router is clamped to both guide columns at the same time with only one clamping handle. It is absolutely torsionally resistant and guarantees exact routing results.



World First

Endless time saving.

The router bit change is faster and safer than ever before thanks to the convenient spindle stop with rocker and ratchet technique. The router bit is changed without removing the spanner and the OF 1400 is ready for action in a flash.



Undeniably fast.

A single rotary knob is all it takes to simultaneously secure both guide rods. In this way, the parallel stop is quickly installed and removed.



Winner of the
iF Product Design Award 2004

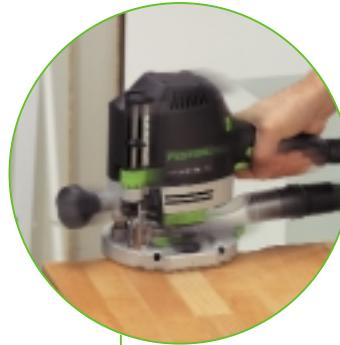
Tremendously handy.

Without having to change grip, you can operate the on/off switch and the stepless speed adjustment. This means that the machine is always safely in your hand.



Remarkable handling.

Little effort: especially when routing corners, the ergonomically shaped bar handle is ideal for safe guidance of the router. The OF 1400 allows you to work longer and with less strain.



Unbeatable depth effect.

Due to the high router carriage stroke of 70 mm, tasks that require a considerable routing depth with templates, or recessing of metal fittings, no longer constitute a problem.

70 mm

World First



Immediate change.

A simple click and you're ready. The copying rings are changed quickly and safely without the need for tools. And centred exactly into the bargain.



Direct cleanness.

Clear prospects: the extractor hood, which is secured without tools, and the new, unique chip catcher quickly and thoroughly eliminate dust at a rate of up to 99 %. Thus creating a healthy work environment.

The new router OF 1400

In Detail and in Action

Unmatched performance. The OF 1400 router

Manageability/routing stroke



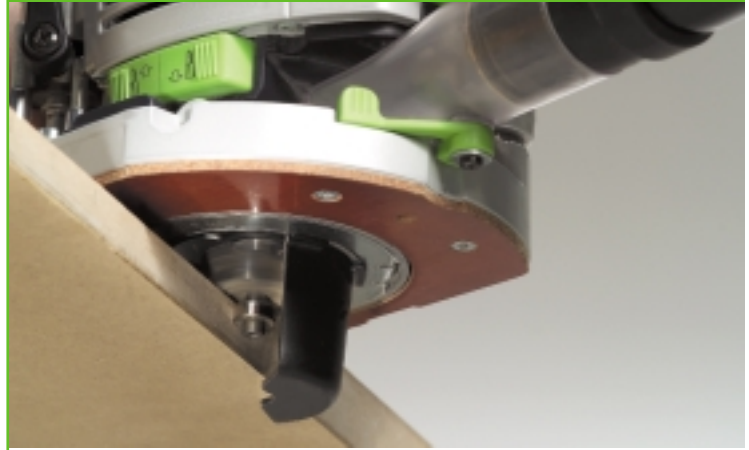
Unlimited application.

High performance without weight problems: the OF 1400 combines high power with user-friendly handling. The correct tool design is a prerequisite.

Weighing 4.5 kg, the OF 1400 is the **lightest tool in its class** – and all this with an output of 1400 Watt. The combination of the ergonomic bar handle on one side and the clamping grip on the other are essential prerequisites for **fatigue-proof work over long periods**. The handles also help to improve tool guidance.

With a **routing stroke of 70 mm**, the new router is ideal for many applications. For example: recessing of metal fittings on windows and doors with deep rebates. This compensates for the usable routing depth that is lost when routing templates are used.

Dust extraction



Problem-free work.

A neat performance: the optimised extractor of the OF 1400. It guarantees that routing chips and dust do not spread out on to the workpiece or workplace. The air also remains clean.

The **chip catcher, which can be rotated through 360°**, catches the chips and wood dust directly at the router and conveys them to the extractor hood with connected extractor hose. Using this process when **edge routing, means that up to 99 %** of the chips and dust created **are extracted**.

Here, the advantages of the bar handle and the extractor hose running parallel to it are demonstrated: they ensure unimpeded work and optimised handling.



Simple routing of circles: set radius, mount OF 1400 with copying ring.



Routing of tilting fillets or angled grooves: no problem with the guide system.



The extractor hood can also be used with the router installed.



A simple click and the chip catcher is fitted.

sets new standards.

Double guide column clamping system



Irrefutable precision.

No wobbling here because the OF 1400 is clamped simultaneously at both guide columns. This clamping ensures that the router is **absolutely torsionally rigid**. The routing result: perfect. You can forget time consuming reworking.

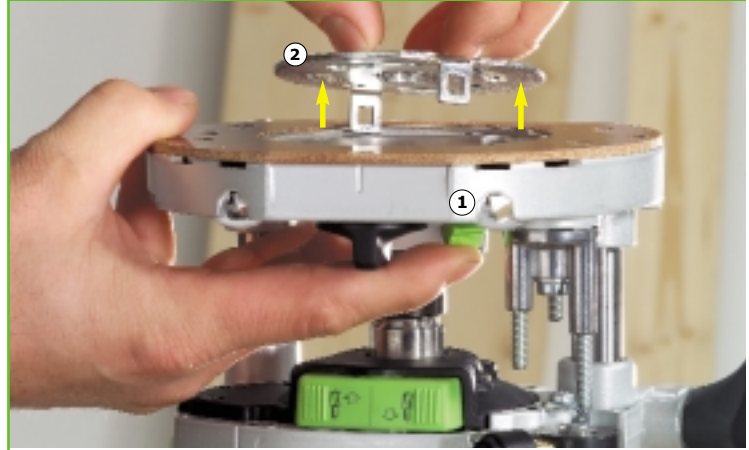
The router tools are also changed just as easily and comfortably. The new **spindle stop with rocker and ratchet technique** saves you time consuming, repeated conversion of the fork spanner.

Now router and clamping collets can be changed easily and quickly. In the range from 6.35 mm to 12.7 mm, all common clamping collets can be used with the OF 1400.



Thanks to the ratchet technique, router bit changing is comfortable, fast and safe.

Tool-free copying ring change



Uncomplicated replacement.

Everything ready in double time. The copying ring is fitted with a simple click, **without effort and without tools**. It can be removed again just as quickly.

This not only saves you time, but you also avoid mistakes: the copying ring fits in only one position and, thanks to the centring system, **is 100 % accurate**.

The system is supplemented by useful accessories which fit the copying ring holder: the base runner with a small hole diameter is ideal for working with small routers. It ensures that the OF 1400 has a flat and stable position on the edge.

Routing with more precision is not possible.



Simply fit it: tool-free change between base runner and copying ring (also available for jointing system VS 600).

The new router OF 1400

Safe routing with a system

Router OF 1400



Simple handling, accurate results.

- The double guide column clamping system secures the router and guarantees optimised routing results.
- Convenient router bit change with rocker and ratchet technique without spanner conversion ensures fast and safe router bit change.
- Tool-free, fast copying ring change with exact centring.

Version

Order no.

Scope of delivery: clamping collet dia. 12 mm, copying ring dia. 30 mm, extractor hood and chip catcher, side stop with fine adjustment, operating tools, in a Systainer

OF 1400 EBQ-Plus

474 410

Technical data

Power input	1400 W
Cutter spindle speed	10000 – 22500 rpm
Rapid routing depth setting feature	70 mm
Routing depth fine adjustment	8 mm
Connection for dust extraction dia.	27/36 mm
Weight	4.5 kg



An alternative of the OF 1400 router is hardly feasible. But suitable accessories are available.

Even on its own, the OF 1400 is a true professional. But together with its matching system accessories, it is unbeatable. From the extraction technique, to the guide system and to the individual router tools, all components are optimally tuned to one another: for perfect results, energy savings and versatile application options.

System accessories

Description and application

	<p>Clamping collets with union nut for OF 1400, OF 2000</p> <p>SZ-D6,35, Order No. 492 141</p> <p>SZ-D8,0, Order No. 492 005</p> <p>SZ-D9,53, Order No. 492 142</p> <p>SZ-D10,0, Order No. 492 139</p> <p>SZ-D12,0,¹⁾ Order No. 492 140</p> <p>SZ-D12,7, Order No. 492 143</p>
	<p>Copying rings for OF 1400</p> <p>KR-D24,0, Order No. 492 183</p> <p>KR-D27,0, Order No. 492 184</p> <p>KR-D30,0,¹⁾ Order No. 492 185</p> <p>KR-D40,0, Order No. 492 186</p>
	<p>Copying rings for OF 1400/VS 600</p> <p>KR-D8,5, Order No. 492 179</p> <p>KR-D13,8, Order No. 492 180</p> <p>KR-D17,0, Order No. 492 181</p> <p>KR-D24,0, Order No. 492 182</p>
	<p>Base runner for OF 1400 reduces the size of the router opening to match the router bit diameter; passage max. 39 mm</p> <p>LA-OF 1400, Order no. 492 574</p>
	<p>Base runner with chip catcher for OF 1400, OF 2000 for lateral extraction when working on edges. Base runner on one side with support widener; passage max. 70 mm</p> <p>LAS-OF 1400, Order No. 493 046 Available from August 2004</p>
	<p>Extractor hood for OF 1400/VS 600 for lateral extraction when using the OF 1400 on the router jointing system VS 600</p> <p>AH-OF 1400, Order No. 492 585</p>
	<p>Guide stop for OF 1400 for using the OF 1400 router with the guide system FS; with fine adjustment.</p> <p>FS-OF 1400, Order No. 492 601</p>
	<p>Guide rails for routers</p> <p>FS 800/2, Order No. 491 499</p> <p>FS 1080/2, Order No. 491 504</p> <p>FS 1400/2, Order No. 491 498</p> <p>FS 1900/2, Order No. 491 503</p> <p>FS 2400/2, Order No. 491 502</p>

¹⁾ Available as standard in the scope of delivery.

System accessories



Description and application

Multi-routing template for OF 1010, OF 1400, OF 2000
for rectangular or round routing with all Festool routers; all legs can be extended
Scope of delivery: 2 angle stops, tilt protection and circle routing insert

MFS 400, Order No. 492 610
max. routing 300 x 100 mm
min. radius 50 mm
max. radius 300 mm

MFS 700, Order No. 492 611
max. routing 600 x 300 mm
min. radius 50 mm
max. radius 600 mm

Extension profile for MFS
MFS-VP200, Order No. 492 722
MFS-VP400, Order No. 492 723
MFS-VP700, Order No. 492 724
MFS-VP1000, Order No. 492 725
MFS-VP2000, Order No. 492 726

Routing carriage for OF 1400
for routing large surfaces
MFS-FS, Order No. 492 728

Worktop routing template for OF 1400
for corner and panel joints with depth up to 900 mm; copying ring dia. 30 mm required
APS 900, Order No. 492 727

Routing aid for OF 1010, OF 1400, OF 2000
for routing Schalex, Achalex (door seals) and espagnolettes in doors and windows
FH-OF 2000, Order No. 492 037

Jointing system for OF 1010, OF 1400
for production of covered and open dovetail joints as well as dowel and slot joint
VS 600, Order No. 488 876

Work module for bench-mounted router for OF 1400 and OF 2000
for bench-mounted use in the Basis Plus; complete with protection device and stop; max. router bit diameter 70 mm
Basis 6 A, Order No. 570 107

Mobile dust extractor CT
(as an example of the CT mobile dust extractor series)
Scope of delivery: 1 mounted filter bag, suction hose dia. 27 x 3.5 m-AS, sealing cover for suction spout, in a box
CT 33 E, Order No. 583 304

Router tools for OF 1010, OF 1400, OF 2000
for routing round edges and transitions of solid surface (mineral materials).
Select from approx 160 router bits.

Further information is available in the router bit brochure, from your specialist dealer, in the main catalogue or visit www.festool.com

The Festool Routers – manageability and perfection

With the new OF 1400 router and the tried and tested OF 1010 and OF 2000 routers, you have a router offer at your disposal easily capable of covering all routing tasks.



OF 1010

The OF 1010: handy and small for light routing. With its light weight and easy single-handed operation, the fine adjustment ensures perfect work results in the precision work area.



OF 1400

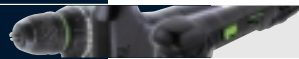
The OF 1400 – the handy medium-sized router for light to heavy routing – a multi-talented tool. With its incomparable combination of manageability and routing depth, it is an ideal solution to numerous application problems.



OF 2000

The OF 2000 – the big one for heavy routing work. High power combined with an armature shaft with a double bearing produce a neat routing surface, even with the most difficult of materials.

The router range is supplemented by the edge routers OFK 500 and OFK 700 for faultless finished edges.



Your link to more information...

Online product catalogue

Service

News and special offers

Dealer search

Test reports

Example applications

3D animation

On our current Festool site you can, for example, find information about

- the complete product range
- new products
- countless product animations
- many helpful application examples, plus
- our comprehensive service offer.

And all of this at your leisure.

FESTOOL

www.festool.co.uk



Regardless of how long the warranty period is set by law, with Festool you're guaranteed to be better off. Festool grants a 1 year guarantee from the date of purchase, as long as the tool has been used correctly. This guarantee is automatically extended by a further two years provided that the guarantee form that is enclosed with every new tool, is filled in and returned to Minden Industrial Ltd within 30 days from the date of purchase.

FESTOOL

Minden Industrial Ltd.
Saxham Business Park
Saxham
Bury St. Edmunds
Suffolk IP28 6RX
England

Telephone: 01284 760791
Facsimile: 01284 702156

E-mail: info@minden-ind.co.uk
<http://www.minden-ind.co.uk>